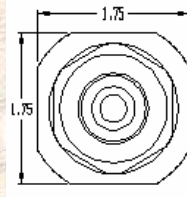
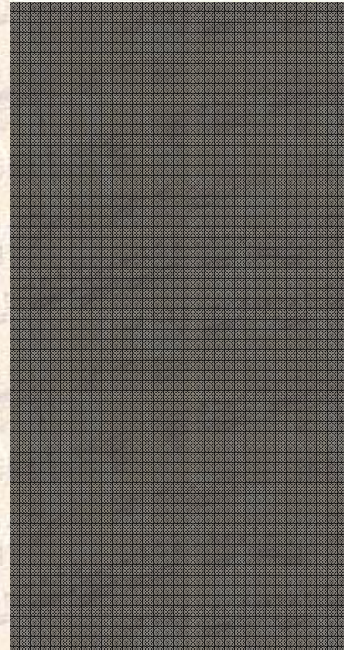


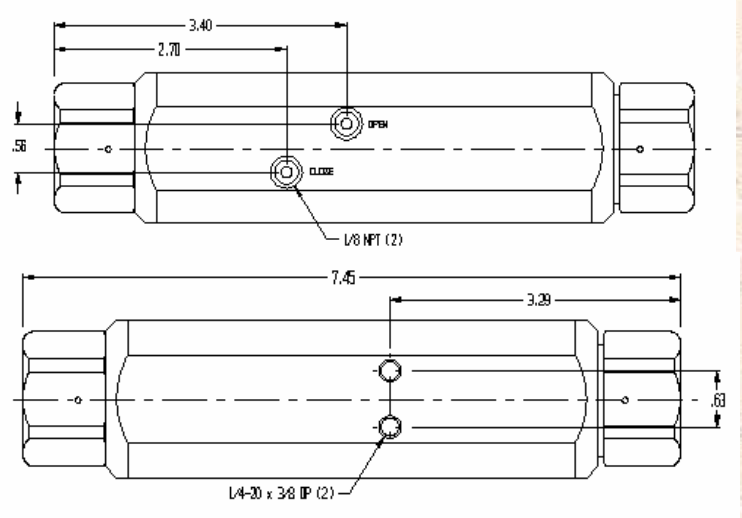
**Control Valve**  
*2-Way NC or NO*  
*Air or Hydraulic*



**BKO Technical**

**HIGH PRESSURE SPECIALISTS**

UNIQUE COMPONENTS FOR THE  
 HIGH PRESSURE INDUSTRY



Pictured: Model #20CA09MPF-NC

<u>Maximum Pressure</u>	<u>Series</u>	<u>Port Size</u>	<u>Port Type</u>	<u>Function</u>	<u>Seal Option</u>
<b>20</b>	<b>CA</b>	<b>09</b>	<b>MPF</b>	<b>NC</b>	
20=20,000 PSI (Std. Port=09MPF)		04=1/4"	MPF=Medium Pressure Female	NC=Normally Closed NO=Normally Open	Blank=Std. Urethane
30=30,000 PSI (Std. Port=06HPF)		06=3/8"	HPF=High Pressure Female		
60=60,000 PSI (Std. Port=06HPF)		09=9/16"			
		16=1"			

- Pressures to 60,000 PSI
- Stainless Steel Construction
- High Flow
- Pilot Pressure
  - Air - as low as 35 psi
  - Hydraulic- up to 3,000 psi



**Other High Pressure Components:**

- Quick Disconnect Couplings
- Pressure Relief Valves
- Pressure Regulators



To contact us:

Phone: 651-452-2077  
 Fax: 651-452-5336  
 Email: [sales@bkotechnical.com](mailto:sales@bkotechnical.com)  
 Website: [www.bkotechnical.com](http://www.bkotechnical.com)

BKO Technical  
 5561 156th Lane NW  
 Ramsey MN 55303